



Mozilla 1.5 Setup Instructions

Step 1:

Open your Mozilla mail software, then go to 'Edit' -> 'Mail & Newsgroups Account Settings' as shown below in Fig 1.

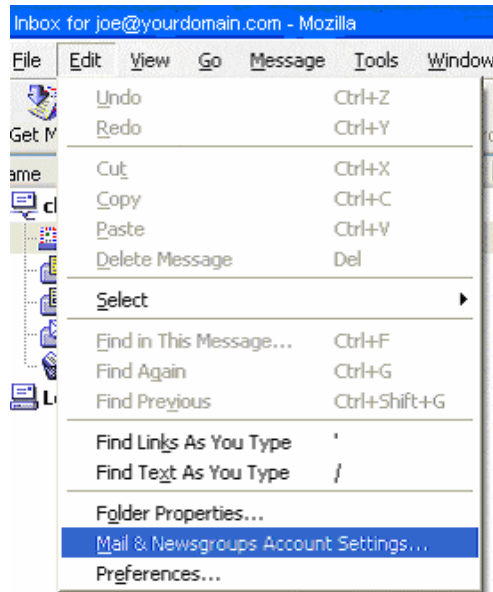


Fig 1

Step 2:

When the dialog box appears, select the 'Outgoing Server (SMTP)' option on the left hand side.

Ensure that the 'Server Name' text box contains smtp.chesnet.net.

Select the box labeled 'Use name and password', and then enter your full e-mail address (username@chesnet.net) in the 'User Name' field. See below in Fig 2.

Hit 'Ok' to apply the settings.

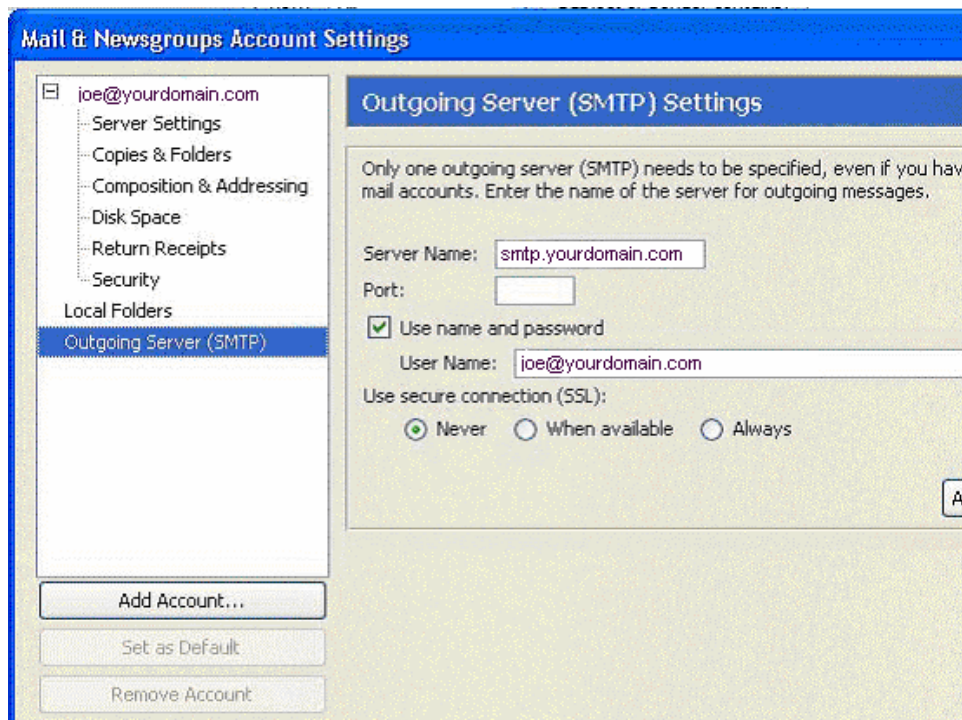


Fig 2

If you have any questions about making these changes, please contact Chesnee's Internet Technical Support at 864-461-2200 or (toll free) 888-375-1553.