



Outlook Express XP Setup Instructions

Step 1:

Open Outlook Express and go to Tools -> Accounts as shown below in Fig 1.

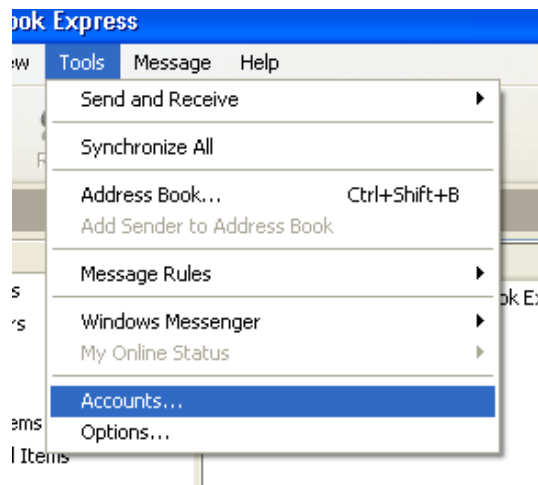


Fig 1

Step 2:

When the 'Internet Accounts' dialog box appears, select the 'Mail' tab.

Highlight the account that you would like to change.

Click the button labeled 'Properties'.

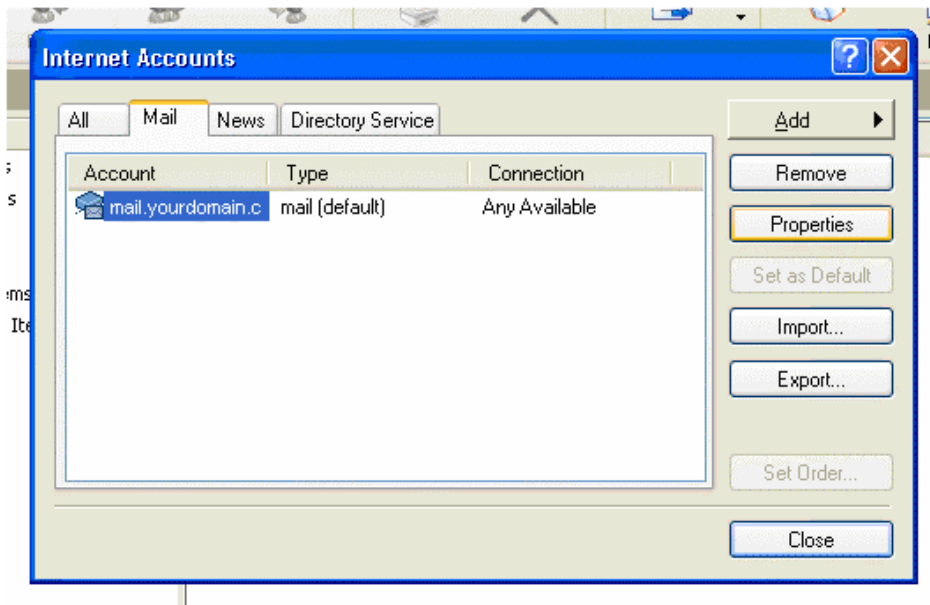


Fig 2

Step 3:

When the 'Properties' tab appears, select the 'Servers' tab.

Ensure that the "Outgoing mail (SMTP)" box contains 'smtp.chesnet.net'.

In the "Account name" area (Fig 3-A), enter your entire e-mail address (username@chesnet.net).

Select the box at the bottom of the dialog box labeled 'My server requires authentication', then hit the button next to it labeled 'Settings' as shown below in Fig 3.

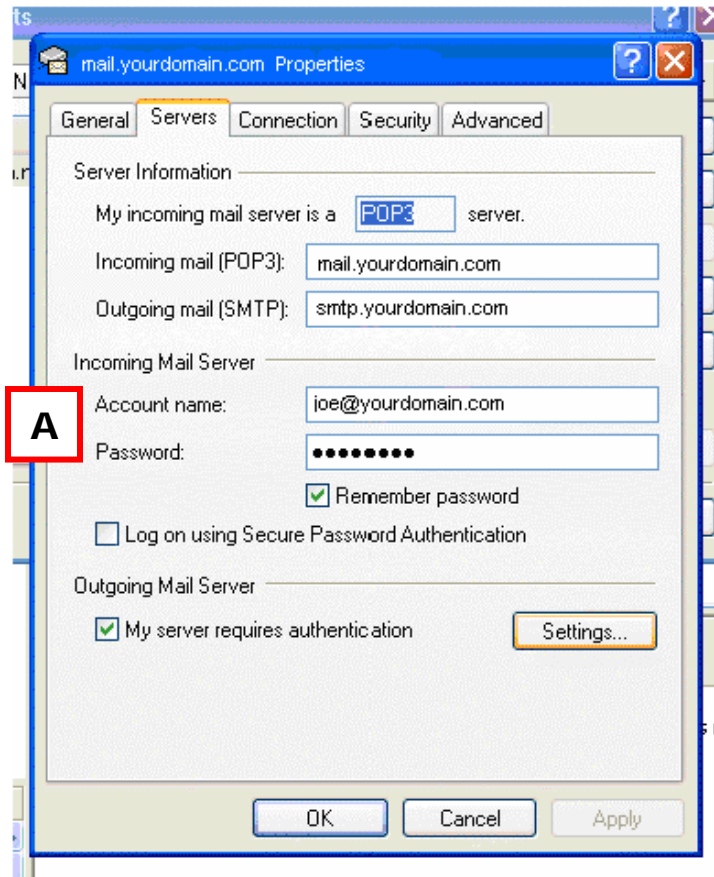


Fig 3

Step 4:

Under the heading of “Logon Information” select the option labeled “Use same settings as my incoming mail server”, then click ‘OK’ as shown below in Fig 4-A.



Fig 4

If you have any questions about making these changes, please contact Chesnee's Internet Technical Support at 864-461-2200 or (toll free) 888-375-1553.